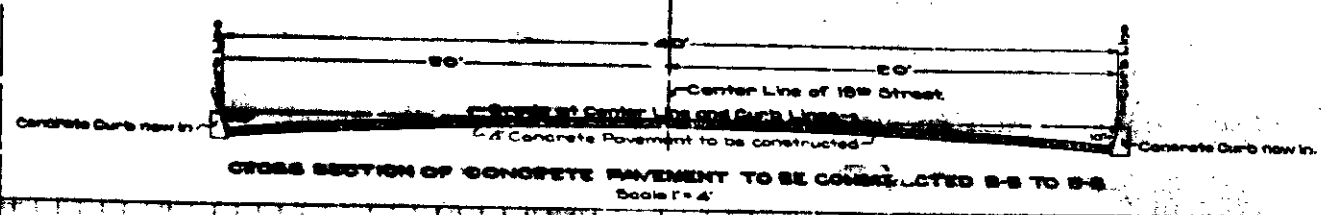
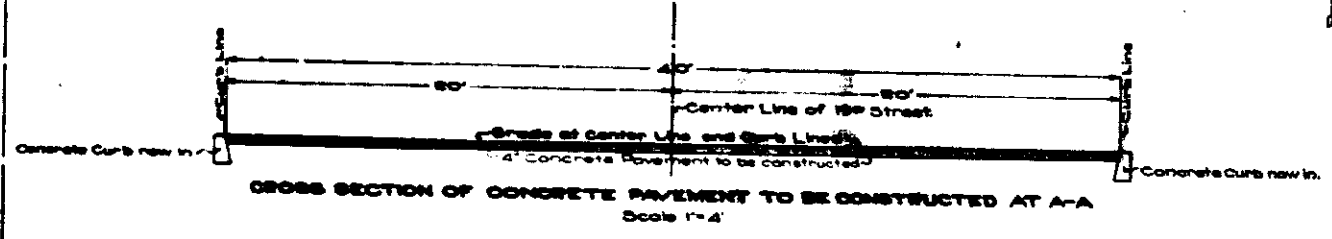
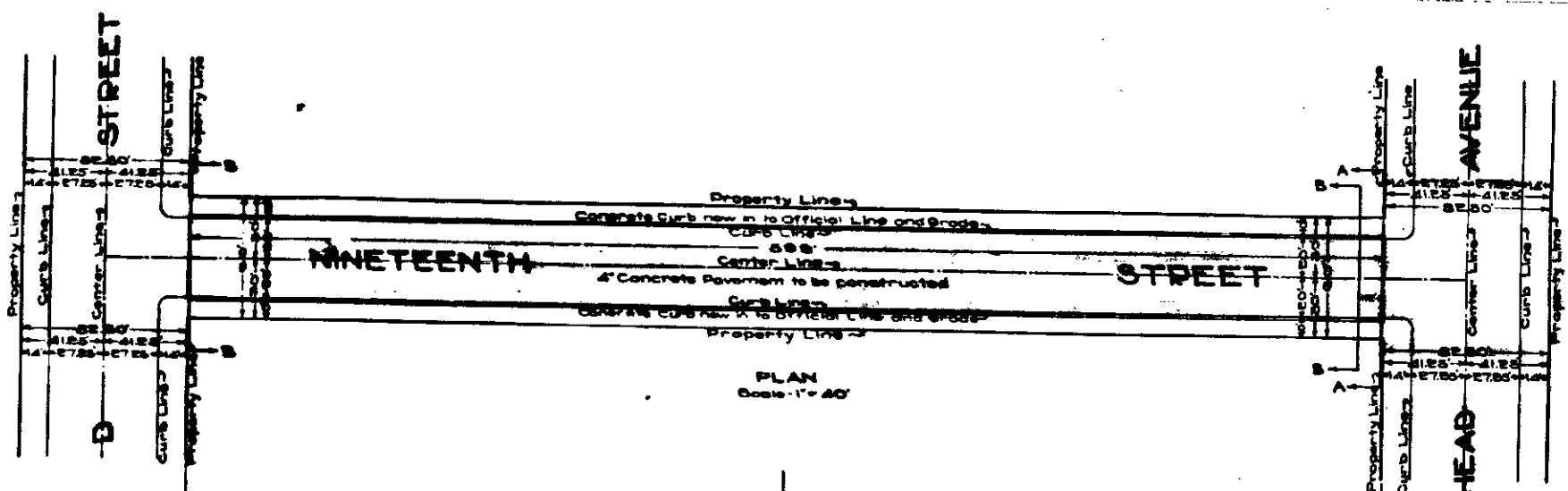


PLAN & PROFILE NO. 724
 FOR
 IMPROVEMENT
 OF
NINETEENTH STREET
 FROM ARROWHEAD AVE. TO D ST.
 IN THE
 CITY OF SAN BERNARDINO,
 CALIFORNIA.

November, 1924
 C.E. Johnson,
 City Engineer
 Scale:
 Plan 1" = 20'
 Profile Horizontal 1" = 40'
 Profile Vertical 1" = 4'



LEGEND
 or in wheels 1/32 or inches
 or ft. means Foot or feet
 No. means number
 St. means Street
 Ave. means Avenue
 Elev. means Elevation
 Concrete Pavement to be constructed shown thus
 Concrete Curb new in to Official Line and Grade shown thus

Approximate surface of ground
 Profile of North Curb Line
 Profile of Center Line
 Profile of South Curb Line

Red Lines show approximate surface of ground
 Red Lines show grade to which work shall be done
 Scale - Horizontal 1" = 40'
 Vertical 1" = 4'

Title of Nineteenth Street to City of San Bernardino is by Dedication of Frazer Subdivision in City of San Bernardino. Recorded in Book of Maps No. 16, Page 26 in Recorder's Office for County of San Bernardino.

Grade of Nineteenth Street established Jan. 2, 1925

Map adopted February 2, 1925.

